

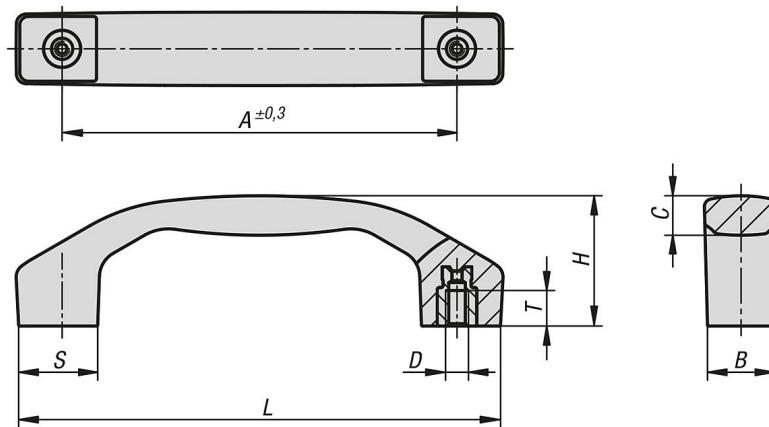
1011 - Metal Detectable Plastic Pull Handles

Document Number: HSE 7249

Date Of Issue: 18/12/2023

Revision Number: 1

Date of Revision: 18/12/2023



All Dimensions in mm unless otherwise stated.

Part Code	A	B	C	D	H	L	S	T	Load capacity N
1011-T785-P02-01	100	17	9,5	M5	33	122	20	9	1000
1011-T785-P02-02	120	21	11,4	M6	39	146	24	12	1000
1011-T785-P02-03	140	24	14,2	M8	45	170	28	12	1000

Product description:

The metal detectable operating parts are made from a EU10/2011 and FDA conform plastic granulate. Due to special additives to the plastic granulate, it is possible for metal detectors (induction technology) to detect plastic particles from a size of 0.027 cm³ (3x3x3 mm). This means that in sensitive production sectors, e.g. foodstuff processing, plastic fragments of metal detectable operating parts can be identified and the risk of production downtimes or complaints are significantly reduced.

Material:

Thermoplastic (fibreglass reinforced polyamide), metal detectable, EU10/2011 and FDA conform.

Steel parts stainless steel 1.4404.

Version:

Thermoplastic black-grey RAL 7021.

Steel parts bright stainless steel.

Note:

The metal detectable additive can lead to partial colour variations in the plastic surface. Screw-on dimension "A" applies after grip assembly. In the unassembled state it may deviate through flexural stress by deforming.

Application:

- Foodstuff industry
- Pharmaceutical industry
- Packaging industry

Temperature range:

-20°C to +100°C.

Assembly:

From the rear.

Advantages:

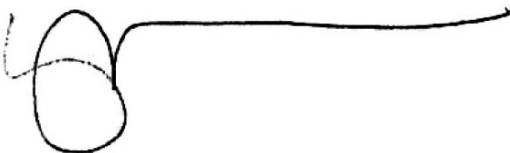
Metal detectable.

Detections volume $\geq 0.027 \text{ cm}^3$.

Foodstuff conform material.

Disclaimer: The information contained herein is based upon data believed to be up-to-date and correct at the time of writing. It is provided to our customers to aid relevant risk assessments /risk management for compliance with regulatory requirements for food contact materials. Persons receiving this information must exercise their independent judgement in determining its appropriateness for a particular purpose.

No warranty is given or implied with respect to this information or patent infringement. Detectamet Ltd do not accept liability for loss or damage arising from the use of this information. Results are based on a test sample, our general experience and information from our suppliers. Data and results must be confirmed by the buyer by testing for its intended conditions of use.



Helen Morrison
Group Managing Director

